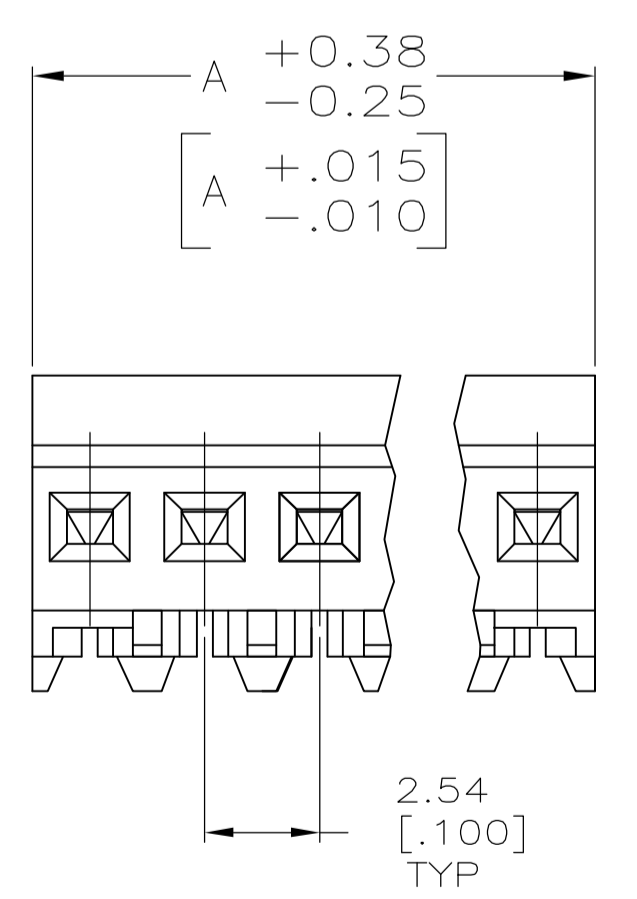
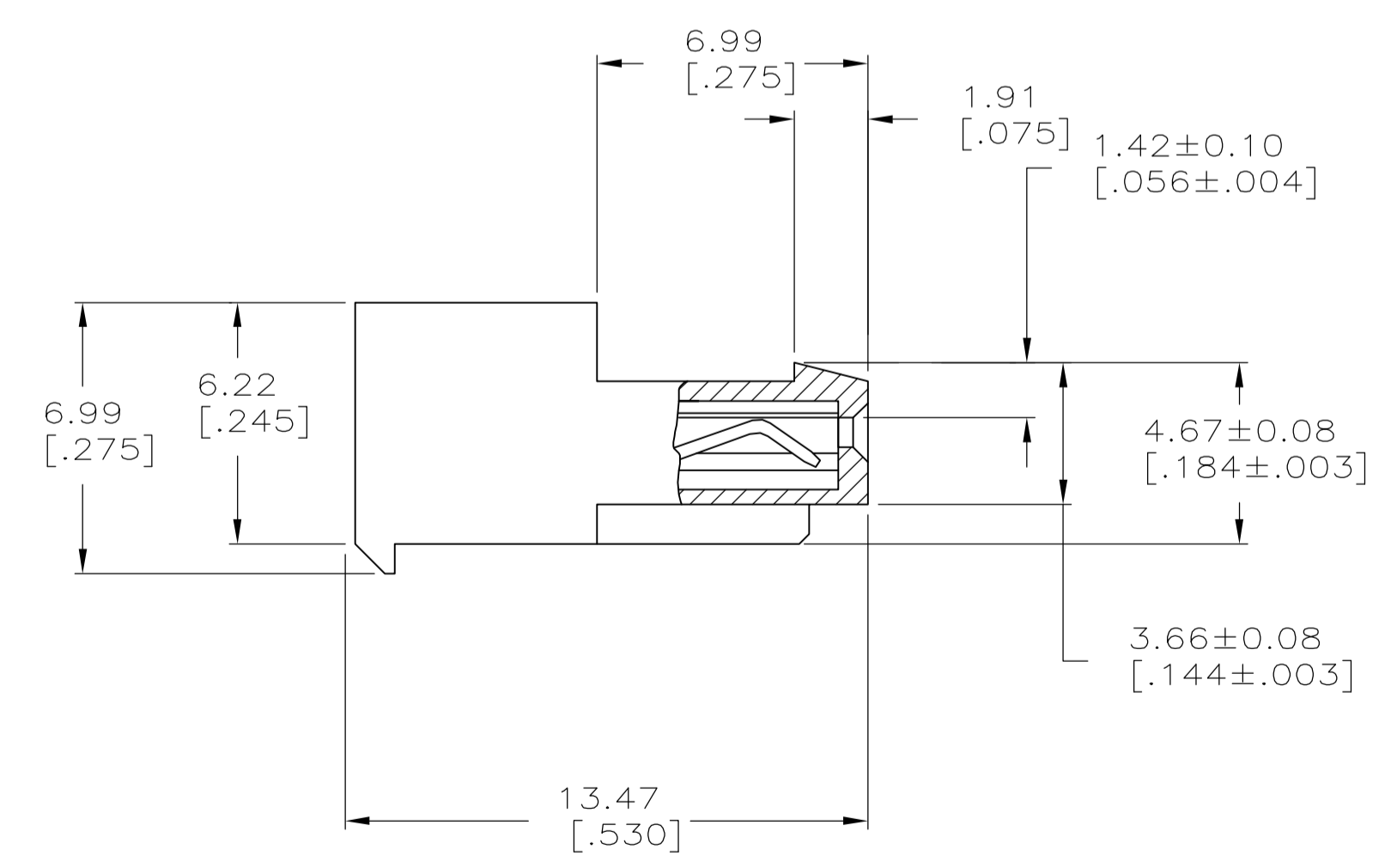
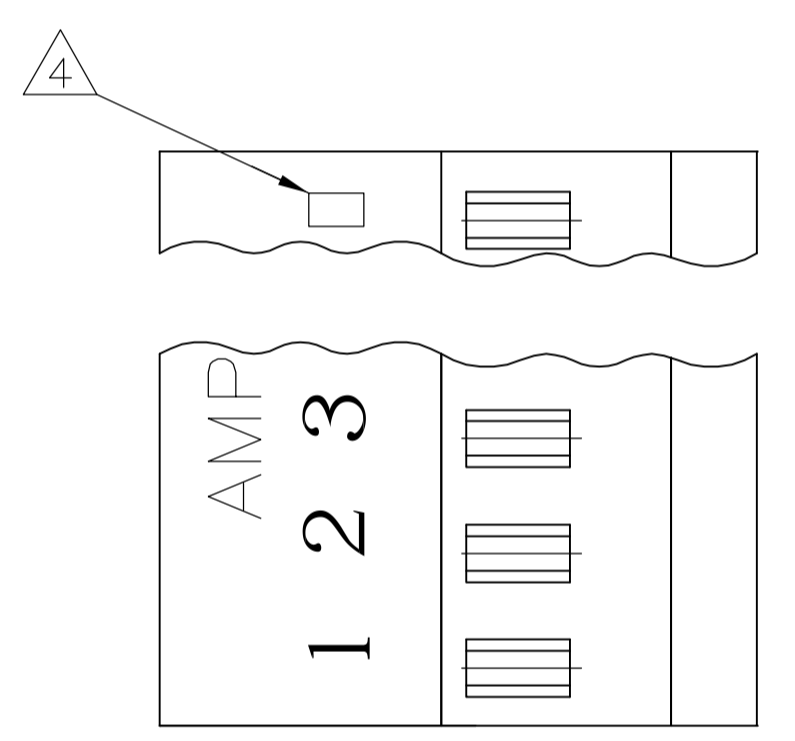


- 1 MATERIAL: CONNECTOR-NYLON UL94V-2 (WHITE).
 CONTACTS-0.30 [.012] THICK COPPER ALLOY
 BRIGHT TIN-LEAD 0.00203 [.000080] MINIMUM THICK FOR CONTACTS
 641535-2 THRU 641535-6,
 MATTE WHISKER MITIGATED TIN PLATE 0.00203 [.000080] MINIMUM THICK OVER
 NICKEL UNDERPLATE FOR CONTACTS 3-641535-2 THRU 3-641535-6.
- 2. CONTACTS ACCEPT 24 AWG WIRE WITH 1.52 [.060] MAXIMUM INSULATION DIAMETER.
- 3. CONTACTS MUST ACCEPT 0.36-0.51 [.014-.020] SQUARE OR ROUND POST AND
 REMAINED LOCKED IN POSITION.
- 4 IDENTIFICATION NUMBER FOR LAST CIRCUIT MAY NOT APPEAR ON ALL ASSEMBLIES.
- 5. DIMENSIONS IN BRACKETS ARE IN INCHES.
- 6. HOUSING FEATURES ARE: CLOSED END WITH LOCKING RAMP & LED CONTACT.



LEAD FREE	15.24 [.600]	6	3-641535-6
	12.70 [.500]	5	3-641535-5
	7.62 [.300]	3	3-641535-3
	5.08 [.200]	2	3-641535-2
	DIM A	NO.OF POSN	ASSEMBLY

CONTAINS LEAD	15.24 [.600]	6	641535-6
	12.70 [.500]	5	641535-5
	7.62 [.300]	3	641535-3
	5.08 [.200]	2	641535-2
	DIM A	NO.OF POSN	ASSEMBLY

METRIC

THIS DRAWING IS A CONTROLLED DOCUMENT.

DIMENSIONS: mm [NCHES]	TOLERANCES UNLESS OTHERWISE SPECIFIED:	DWN S. HOOVER 10-DEC-2004	CHK D. BOSSI 10-DEC-2004	APVD D. BOSSI 10-DEC-2004	NAME	tyco Electronics	Tyco Electronics Corporation Harrisburg, Pa 17105-3608
0. PLC ±	1. PLC ±	2. PLC ±	3. PLC ±	4. PLC ±	PRODUCT SPEC	108-1050	MTA-100 CONNECTOR ASSEMBLY, 24 AWG, FOR .014 TO .020 POST, SPECIAL
MATERIAL 1	FINISH 1	SIZE A1	CAGE CODE 00779	DRAWING NO. 641535	RESTRICTED TO		
CUSTOMER DRAWING				SCALE 5:1	SHEET 1 of 1	REV N	